

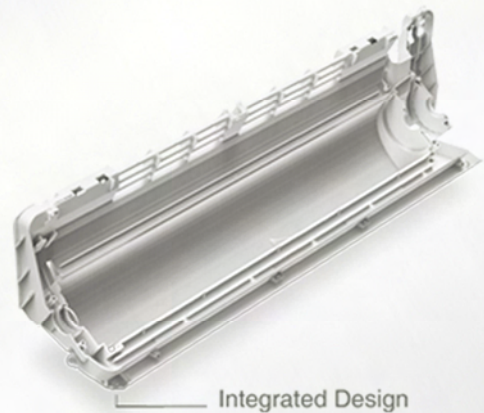
Neola split



Neola split

Integrative Design

Base pan and air outlet pan assembly adopt integrated design for easy installation and maintenance.



Integrated Design

New Integrated Structure



Conventional Structure

Features

- Auto Restart Function
- Sleep Mode
- Cold Catalyst Filter
- Louver Position Memory Function
- Refrigerant Leakage Detect
- Two-direction Air Vane
- Temp Compensation

Specifications_Neola Series

Model No.		MS11D-09HRDN1	MS11D-12HRDN1	MS11D-18HRDN1	MS11D-24HRDN1
Cooling Capacity	Btu/h	8500(2250~10000)	11000(2450~13500)	17000(5100~22000)	23000(12000~25000)
	kW	2.5(0.7~2.9)	3.2(0.7~4.0)	5.0(1.5~6.4)	6.7(3.5~7.3)
Heating Capacity	Btu/h	9500(2300~11000)	12500(2800~16000)	17000(5300~23000)	24000(11000~27000)
	kW	2.8(0.7~3.2)	3.6(0.8~4.6)	5.0(1.5~6.7)	7.0(3.2~7.9)
Power Supply	V~,Hz,Ph	220-240V~,50Hz,1Ph	220-240V~,50Hz,1Ph	220-240V~,50Hz,1Ph	220-240V~,50Hz,1Ph
Power Input (W)	Cooling	770(180~1100)	1000(210~1380)	1550(380~2000)	2100(820~2500)
	Heating	770(170~1050)	1010(210~1480)	1380(350~2000)	1950(800~2700)
Operating Current (A)	Cooling	3.4(0.9~4.8)	4.4(1.0~6.2)	6.9(1.8~10.2)	9.4(3.6~11.2)
	Heating	3.4(0.8~4.6)	4.5(1.0~6.6)	6.2(1.6~9.0)	8.5(3.5~12.0)
EER (W/W)	W/W	3.21	3.22	3.21	3.21
COP (W/W)	W/W	3.62	3.63	3.61	3.61
Air Flow Volume (m ³ /h)	Indoor	530/430/390	630/550/420	850/750/550	1200/1100/900
	Indoor(Hi/Med/Lo)	36/30/28	38/35/28	43/39/33	47/45/39
Noise Level (dB(A))	Outdoor	55	55	56	59
	Indoor (W×H×D)	680×255×178	770×255×188	905×275×198	1030×315×218
Net Dimension (mm)	Outdoor (W×H×D)	700×540×240	780×540×250	760×590×285	845×700×320
	Indoor/Outdoor	7/26.5	7.5/28	9/37.5	12/49.5
Net Weight (kg)	Indoor (W×H×D)	745×330×255	835×330×265	970×345×270	1115×395×300
	Outdoor (W×H×D)	815×580×325	910×585×335	887×645×355	965×755×395
Gross Weight (kg)	Liquid	Φ6.35 (1/4)	Φ6.35 (1/4)	Φ6.35 (1/4)	Φ9.53 (3/8)
	Gas	Φ9.52 (3/8)	Φ9.52 (3/8)	Φ12.7 (1/2)	Φ15.9(5/8)
Piping Size (mm(inch))	Refrigerant	R410a	R410a	R410a	R410a

1.The above design and specifications are subject to change of product improvement without prior notice .
2.The noise level data reflects the level in anechoic chamber .

Dealer Details: